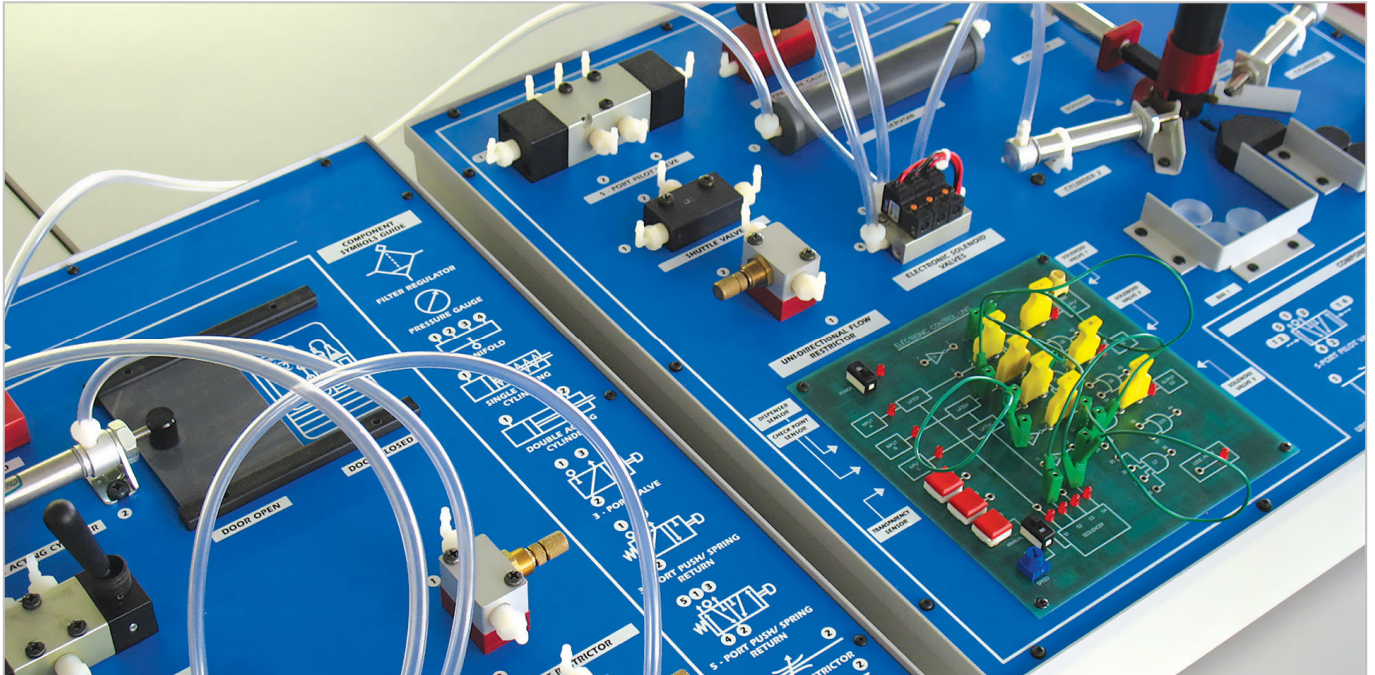


Product Information Sheet

Electro-Pneumatics Trainer



This STEM learning package has been designed to provide practical real world problem solving tasks and activities within the classroom or lab environment.

The Electro-pneumatics Trainer offers a classroom-based resource for practical investigation of pneumatic components and systems.

The trainer consists of a two-part rig, the first of which allows users to connect components to create fundamental circuits. The second element is an electro-pneumatic sorting system that brings together electronic sensing, actuators and logic gates to sort clear and black parts into different bins.

This resource is supplied with a curriculum CD containing practical tasks and activities, as well as tutor support materials.

The trainer can also be used in conjunction with our optional cloud-based software packages, which offer online practical tasks as well as interactive theory presentations, investigations, and assessments, which link directly to the practical activities carried out using this resource.

Typical Practical Activities Include:

- Principles of Pneumatics
- Components, Symbols and Circuits
- Cylinders
- Valves
- Speed Control
- Pneumatic Logic Functions
- Electro-pneumatics
- Sequential Control & Automatic Circuits
- Time Delays
- Problem Solving

Items Included:

- Trainer (Part 1 – Component Board)
- Trainer (Part 2 – Electro-pneumatic Sorter)
- Hand Operated Air Compressor
- Accessory Kit
- Power Supply
- Curriculum Manual CD

Part 1 Pneumatic Components:

- 1 x Pressure Regulator
- 1 x Supply Pressure Gauge
- 1 x 4 Port Supply Manifold
- 1 x Single Acting Cylinder
- 1 x Double Acting Cylinder
- 1 x Double Acting Cylinder Operated Door
- 1 x 3 Port Valve
- 1 x 3 Port Valve (Spring Return)
- 1 x 5 Port Valve (Spring Return)
- 1 x Exhaust Restrictors
- 1 x Uni-directional Flow Restrictor

Part 2 Pneumatic Components:

- 1 x 5 Port Pilot Valve
- 1 x Inline Pressure Gauge
- 1 x Shuttle Valve
- 1 x Reservoir
- 1 x Uni-directional Flow Restrictor
- 3 x Electronic Solenoid Valves
- 3 x Single Acting Cylinders
- 1 x Digital Logic Connection Board (AND, OR, NOT)
- 1 x Parts Sorting Sensors (Optical and Mechanical)
- 2 x Parts Sorting Assembly and Dispenser

For more information visit www.ljcreate.com

FOR MORE INFORMATION CONTACT US!



58 East South Street,
Rossville, IN 46065
800-251-9935
info@aidex.com
www.aidex.com

Product Information Sheet (Continued)

Electro-Pneumatics Trainer



Other Items Required:

- LJ Create Engineering or Technology Content (Optional)
- Computer with DVD Drive
- Fluid Power Student Resources Pack 278-01

General Information:

Power Requirements: 110 – 240V 50-60Hz

Trainer Dimensions (Part 1): 490 x 450 x 150 mm
(W, D, H)

Trainer Dimensions (Part 2): 490 x 450 x 150 mm
(W, D, H)

Packed Volume: Approx. 0.35 m³

Packed Weight: Approx. 25 kg

Order Code: 270-01

P8513-A

For more information visit www.ljcreate.com

FOR MORE INFORMATION CONTACT US!



58 East South Street,
Rossville, IN 46065
800-251-9935
info@aidex.com
www.aidex.com