

FOR MORE INFORMATION CONTACT US!



58 East South Street,
Rossville, IN 46065
800-251-9935
info@aidex.com
www.aidex.com

Print on.





One of the most advanced and affordable benchtop UV flatbed printers in its class, the LEF-12 delivers Roland's unparalleled UV printing capabilities to print directly on a vast array of substrates and three-dimensional objects. Combine CMYK, White and Clear Coat ink for visual impact and unique dimensional effects on giftware, awards, packaging, prototypes, and promotional products like thumb drives, pens, cell phone covers, laptops and more. With the VersaUV LEF-12, you're only limited by your imagination.



Print Directly on Three-Dimensional Objects

The VersaUV LEF-12 accommodates objects up to 3.94-inches thick, with a maximum print area of 11-inches by 12-inches. Print directly onto a wide range of giftware and promotional items ranging from pens, key chains and golf balls to trophies, cell phone covers and even laptop computers. Powered by Roland Intelligent Pass Control™ technology, the VersaUV delivers vibrant, detailed image quality in all print modes.



Advanced ECO-UV Inks for Maximum Performance

The LEF-12 comes configured with CMYK plus White plus Clear Coat ECO-UV inks specially formulated to deliver high color density and wide gamut, for exceptional images print after print. Clear Coat can produce a matte or high-gloss finish for improved scratch and chemical resistance and outdoor durability, or can be built up for 3D textures and embossed effects. ECO-UV ink lasts up to two years outdoors when flooded with clear coat and up to six months unprotected.

Feel the Color with UV Clear Coat Effects and the Roland Texture Library

One of the most powerful features of the VersaUV is the ability to use Clear Coat ink to create a wide range of special effects, from matte or gloss finishes to simulated embossing. By laying down multiple layers of Clear Coat, you can create truly unique textured effects from water droplets to faux leather to dozens of Roland Texture Library patterns. As your customers literally feel the color, you'll find yourself answering their question "How did you do that?"



Unsurpassed Media Compatibility Comes Standard

Advanced ECO-UV inks combined with low heat state-of-the-art UV LED lamps enable the LEF-12 to print on virtually any substrate with optimum print quality. ECO-UV ink adheres to a wide range of treated and untreated substrates, including PVC, PET, ABS, acrylic, wood, boards and much more.

Laser Alignment System for Optimum Registration

The VersaUV LEF-12 incorporates a built-in laser alignment system for quick and easy setup of different materials. Aligning registration by bounding box or center point provides the flexibility to print on objects of all shapes and sizes. Whether it's a flat photo frame, curved golf ball or round coaster, you can automatically capture and process the setup information to ensure proper image placement.

Mist Filters Ensure Quality and Reliability

To ensure outstanding print quality around the curvatures of objects, two mist filters are incorporated in the LEF-12, one on the back of the unit and the other located between the print head and the UV lamp. These mist filters catch most residual ink that may mist when printing off the edge or curvature of a product. This cuts down on overspray and keeps the ink from settling on the printer's internal components. Both filters are easily replaceable by the end user.

Designed for the Environment and Safety

The VersaUV LEF-12 requires only a fraction of the power used by conventional UV printers and features an LED lamp that is completely ozone-free and emits only UV-A light, making the LEF-12 a safe and energy-efficient alternative to conventional UV printers. In addition, the LEF-12 is fully enclosed, reducing the risk of UV light exposure to the eyes and skin while limiting dust and debris, and minimizing ink odor. To ensure proper ventilation and reduce odor, Roland carries an optional air filtration system, custom built for the VersaUV LEF-12. This unit also doubles as a cart and storage unit for jigs, fixtures and supplies.

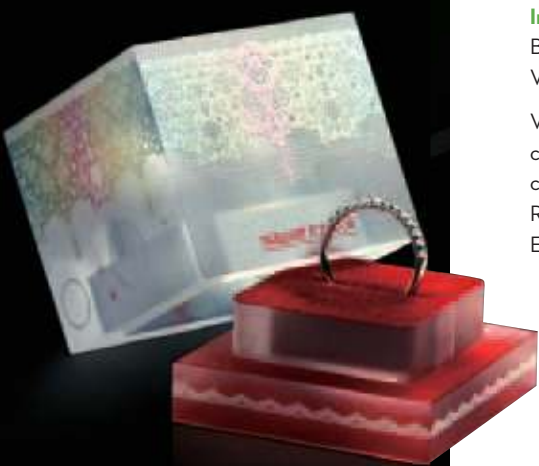
Includes Roland VersaWorks® RIP software with Enhanced Productivity Tools

Based on the latest Adobe® CPSI engine 3019 for faster processing, better color and smoother gradations, VersaWorks RIP is a true Adobe PostScript 3® RIP and can control up to four Roland devices at once.

VersaWorks features the Roland Color System for spot color matching, Variable Data Printing for customized job output, ink consumption and print time estimation, and the Max Impact preset for richer color contrast, outstanding image quality and maximum productivity. VersaWorks also includes the Roland Texture Library featuring 72 ready-to-use textures that can be applied to designs by layering ECO-UV Clear Coat ink.

Includes Roland OnSupport

Roland OnSupport is an online support portal that provides real time feedback on your machine. This system monitors ink levels and provides access to manuals and software updates, how-to guides, preventive maintenance guides, machine usage metrics and periodic updates to firmware. It sends notifications to your cell phone or email address and allows you to both manage productivity and gain direct feedback from Roland.





▲ Optional air filtration** system and stand



PRODUCT HIGHLIGHTS

- Print CMYK plus White and Clear Coat directly on a wide variety of substrates, including three-dimensional items
- Long-lasting UV LED lamps are safe, energy efficient and generate minimum heat
- Advanced ECO-UV inks are instant-curing and flexible so they won't crack
- White ink is ideal for producing rich, dense color graphics on clear and metallic surfaces
- Clear Coat produces matte or gloss finishes and improves scratch and chemical resistance and outdoor durability
- Patent-pending Automated Ink Circulation System minimizes wasted ink
- Roland VersaWorks® software included
 - > Easy-to-Use Graphical User Interface
 - > Roland Color System for precise spot color matching
 - > Variable Data Printing
 - > Manages up to four Roland printers on a network
 - > Roland Texture System for unique texture patterns
- Fully enclosed system reduces risks of UV exposure, keeps out dust and debris, and cuts down on residual ink odor
- State-of-the-Art UV LED Curing System
 - > LED lamp lasts up to 10,000 hours - 10 times longer than conventional UV lamps.
 - > Low heat and highly energy-efficient
 - > Instant On/Off
 - > Create matte or gloss effects
- Two-Year Trouble-Free Warranty*

To learn more about the VersaUV LEF-12, visit www.rolanddga.com/lef

PRODUCT SPECIFICATIONS

Model	LEF-12	
Printing method	Piezoelectric inkjet / Table feed system	
Acceptable media	Width Depth Thickness Weight	13.2 in. (335mm) 12.2 in. (310mm) 3.94 in. (100mm) 11 lbs (5kg)
Printing area	12x11 in. (305x280mm)	
Ink cartridges	Type Capacity Color Configuration	Roland Eco-UV inks 6 cartridges - 220 ml (± 5 ml) 6 colors (Cyan, Magenta, Yellow, Black, White and Clear Coat) CMYK+White+Clear Coat
Ink curing unit	Single UV LED Lamp	
Printing resolutions	Maximum 1440x720 dpi	
Distance accuracy	Error of less than ± 0.3 % of distance traveled, or ± 0.012 in (0.3 mm), whichever is greater	
Interface	Ethernet (10 BASE-T / 100 BASE-TX, automatic switching)	
Power-saving function	Automatic sleep feature	
Power supply	Voltage and frequency Required power capacity	AC 100 to 240 V ± 10%, 50/60 Hz Maximum 1.8 A
Power consumption	During operation Sleep mode	156W 16.7W
Outer Dimensions	39.3 x 34.2 x 21.5 in. (998 (W) x 867 (D) x 546 (H) mm)	
Weight	187.4lbs. (85Kg)	
Environment	Power on Power off	Temperature: 68° to 90°F (20° to 32°C) (72°F [22°C] or more recommended) / Humidity: 35 to 80% (no condensation) Temperature: 41° to 104°F (5° to 40°C) / Humidity: 20 to 80% (no condensation)
Included items	Power cord, adhesive sheet, software RIP (Roland VersaWorks™), user documentation	

Specifications subject to change. * Continuous exclusive use of Roland inks during the first two years of ownership is required to qualify for the free second year of limited warranty coverage. Additional Terms and Conditions apply.
** Room ventilation and an air filtration unit are required.

Get social with us.



Imagine. **Roland**®

FOR COMPLETE PRODUCT SPECIFICATIONS AND FEATURES, OR TO REQUEST A SAMPLE PRINT, CALL 800-542-2307 OR VISIT WWW.ROLANDDGA.COM
 ROLAND DGA CORPORATION | 15363 BARRANCA PARKWAY | IRVINE, CALIFORNIA 92618-2216 | 800.542.2307 | 949.727.2100 | CERTIFIED ISO 9001:2008

RDGA-LEF-01 June 2011