

Liver

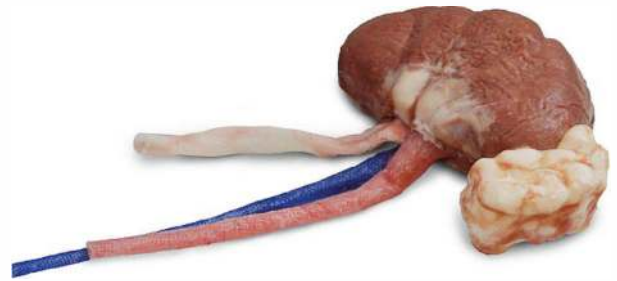
O-LIV-A-0005



Our liver model features skinned outer shell with lobed structure. This organ is also available with the primary arterial and venous trunks, complete biliary system, and a variety of pathologies. They are ideal for incorporation into complex model systems for liver transplant training and biliary stent testing.

Kidney

O-KID-A-0005



Our kidney model features skinned outer structure with separate adrenal glands. This organ is also available with patent and functional renal pelvis, ureter and renal artery and veins. They are ideal for incorporation into complex model systems for kidney transplant training and urinary device testing.

Shown here with options.

Gall Bladder

O-GLB-A-0005



Our gall bladder model features muscular outer shell with inner mucosal lining. They are ideal for incorporation into complex model systems for the investigation of gallstone treatments.

Pancreas

O-PAN-A-0005



Our pancreas model features textured surface with pancreatic notch, head, body and uncinus process. This organ is also available with bile ducts and the primary arterial and venous trunks. They are ideal for incorporation into complex model systems for pancreatic tumor removal and testing gallstone treatment devices.

FOR MORE INFORMATION CONTACT US!



58 East South Street,
Rossville, IN 46065
800-251-9935
info@aidex.com
www.aidex.com