

**SiM** *Spray*®

# The Painting & Coating Training Tool

Turn-Key VR Training for Education and Industry | Train Quicker, Recruit Easier, Save Time and Money

*Build a More Qualified,  
Faster Trained,  
Skilled Workforce*

SimSpray® is the leading training tool for the painting and coating industry





Recruit, Train, and Retain

**For Trainees...**

SimSpray offers a better way to train. Accessible, hands-on experiences deliver a clear picture of performance and support skill growth. This training tool promotes intrinsic motivation by combining the benefits of simulations and gamification. Trainees get independent practice in a controlled and guided training environment. They complete more projects in less time, with better performance feedback. SimSpray also supports collaborative work between students and their instructors.

For engaging training and quick results, train with SimSpray.

“Experienced painters visiting the school all comment on my students’ technique and ask how they got to be so good. **My answer is SimSpray.**”

- Billy Huneycutt,  
Program Head of  
Collision Repair &  
Refinishing Technology

**Real-Time Motion Tracking**

**Accessible, Intuitive Performance Feedback**

**Immediate Results**

**Detailed Training Insights:**  
Mil Build, Transfer Efficiency, Angle, Distance, and Speed

**Adjustable Equipment**  
Functional Nozzle, Trigger, and Dials

**Hands-On Experience**

## Faster, Cheaper, More **Effective** Training Using Virtual Reality

**"SimSpray** is a **valuable tool to use for training** paint associates for manual painting technique practice."

**"Increased associate practice/feedback 15x** more than live painting."

- Top 10 Auto Manufacturer

### For Programs...

SimSpray trains proficient workers, faster. This training tool creates accessible, repeatable learning experiences that do not increase material costs or interfere with the production line. Hands-on experiences are emphasized in SimSpray, while clean-up and prep are minimized. Integrated analysis provides objective performance metrics which support the instructor's ability to guide trainees. Instructors engage in more one-on-one time with trainees and cover more advanced content.

SimSpray improves training results, throughput, and program ROI.

Safe, Controlled Environment

Reduces Training Material Costs

Parallels Real Training

More Accessible With Less Setup

# Training with **SiM Spray**®

## Processes:

- HVLP
- HVLP Conveyor
- Airless
- Airless Conveyor
- Air-Assisted Airless
- Air-Assisted Airless Conveyor
- Powder Coating
- Powder Coating Conveyor
- Abrasive Blasting

## Parts:

- Automotive
- Aerospace
- Construction
- Heavy Equipment
- Industrial Components
- ASTM Panels (American Standards of Testing & Measurement)
- Basic Panels

## Techniques:

- Applicator Speed (Cue)
- Spray Angle (Cue)
- Part Distance (Cue)
- Transfer Efficiency
- Mil Build
- Defect Identification
- HVLP Edge-Blending
- Painting on Conveyor

**Languages:** English, Spanish, French, German, Polish, and Russian

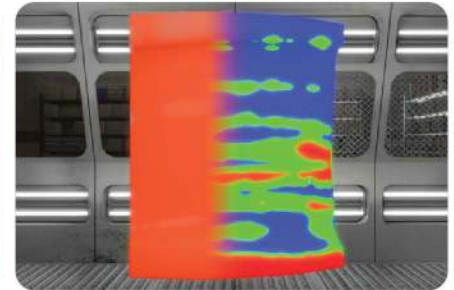
**Effective** - Train with more hands-on practice and develop technique faster with objective feedback and detailed performance analysis.

**Safe** - Training with SimSpray decreases negative environmental impacts and risk from equipment or VOC emissions.

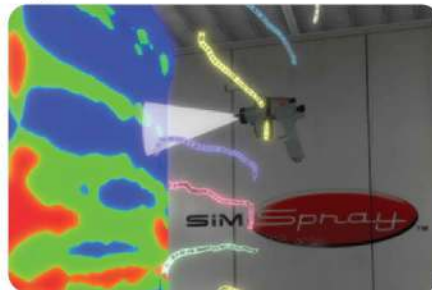
**Cost-Efficient** - Train more students in less time with reduced costs and time spent.



**Realistic Painting** - Paint with primer, color, clear coat, and defects (orange peel, dry spray, drips and sags).



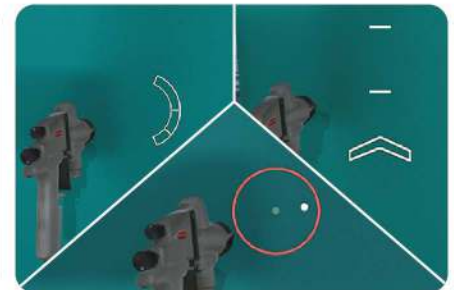
**Coverage Map** - View applied paint thickness vs. target mil build with an easy-to-use map.



**3D Line Replay** - View a 3D line replay of the coater's performance showing gun distance from the part, angle, distance, and speed per pass.



**Performance Review** - Improve with angle, distance, speed, and transfer efficiency scores. Analysis graphs highlight flaws.



**Training Cues** - Guide training with distance, angle, and speed cues to develop ideal coating technique.



**Immersive Environments** - Train in a variety of engaging environments, rich with realistic details.



**Curriculum** - Track trainee progress through customized learning content.



**Integrated ROI** - Track return on investment with an integrated tool that shows system use, material and cost savings, and VOC emissions.